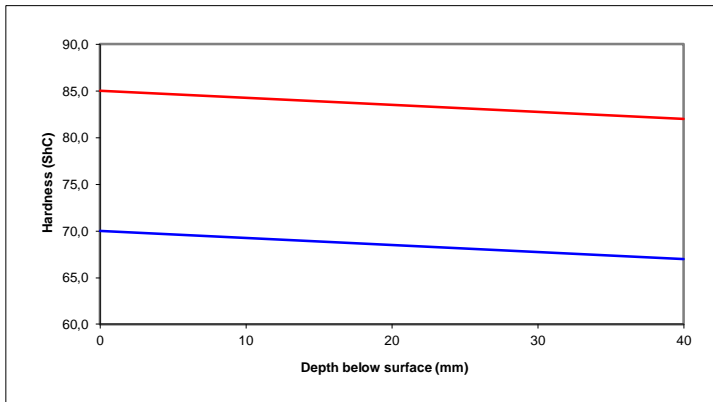


Centrifugal cast ICDP material for work rolls in the medium hardness range.  
 This material has good fire crack, impact and spall resistance  
 with fair wear properties.

### Chemical Composition

	C	Mn	Si	P	S	Ni	Cr	Mo			
<b>Min</b>	3,00	0,20	0,50	0,000	0,000	3,20	0,80	0,00			
<b>Max</b>	3,60	1,30	1,20	0,100	0,100	4,90	1,90	0,70			

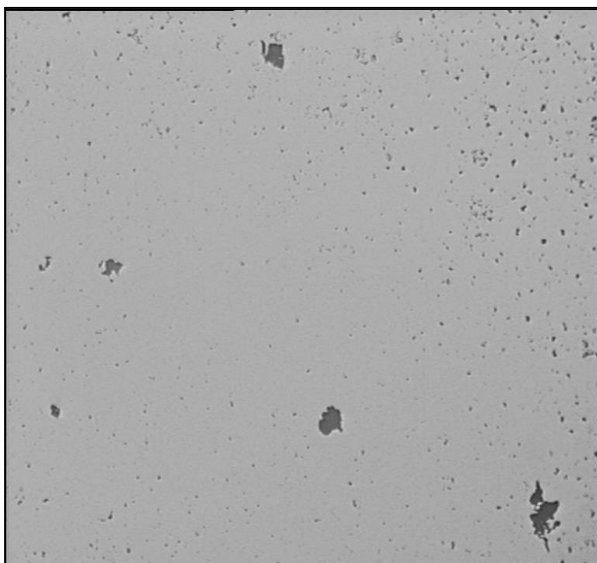
### Hardness Curve



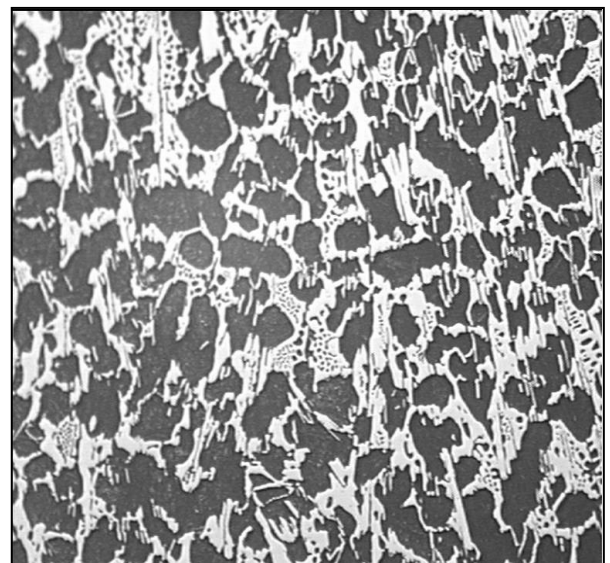
### Physical Properties

Tensile Strength (tensile test rod B12x60 DIN 50125)	300 to 550 MPa
Bending Strength (Bending test 10 at DIN 50110)	400 to 600 MPa
Impact strength (ISO-V Test piece, DIN 50115)	~ 2.0 J
Percentage elongation (after fracture)	< 1 %
Alternating tensile - compression strength	30 to 80 MPa

### Microstructure



50 X - Graphite unetched



100 X - etched