



Material Specification Sheet

Pearlitic Nodular Cast Iron

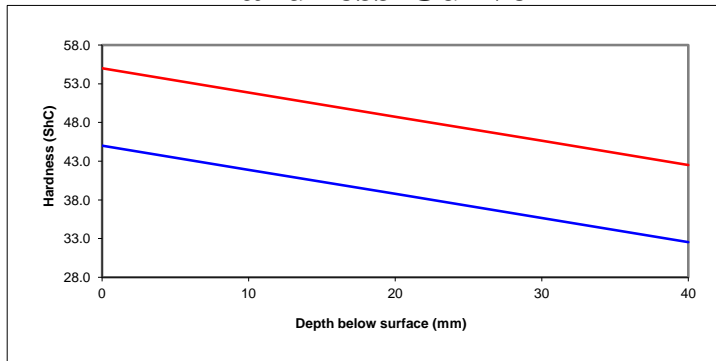
PN 710

A Cr-Ni alloyed iron with a low carbide pearlitic matrix sometimes containing ferrite around the graphite nodules depending on the alloy content.
This material has good fire crack resistance and wear properties.

Chemical Composition

	C	Mn	Si	P	S	Ni	Cr	Mo	Mg		
Min	3.10	0.40	1.20	0.000	0.000	1.20	0.10	0.00	0.04		
Max	3.60	0.80	2.00	0.100	0.100	2.00	0.60	0.30	0.08		

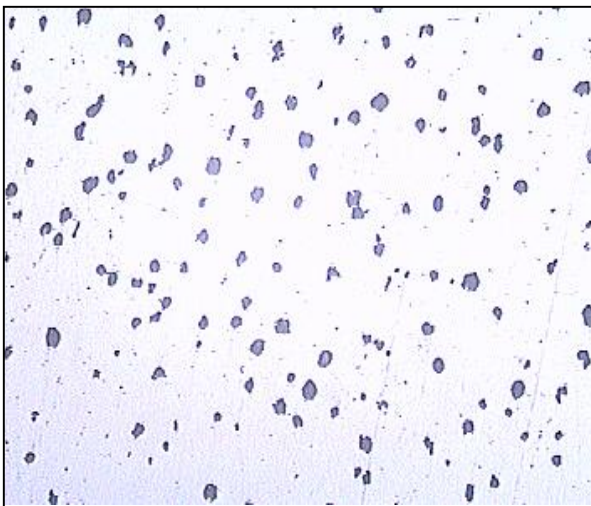
Hardness Curve



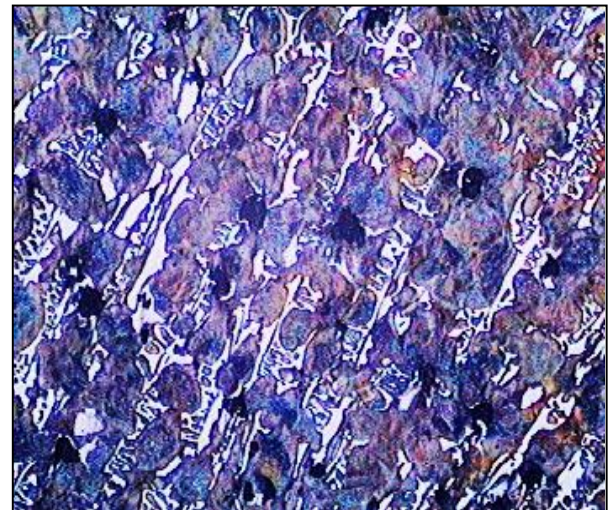
Physical Properties

Tensile Strength (tensile test rod B12x60 DIN 50125)	350 to 450 MPa
Bending Strength (Bending test 10 at DIN 50110)	700 to 800 MPa
Impact strength (ISO-V Test piece, DIN 50115)	2.0 to 2.5 J
Percentage elongation (after fracture)	< 1 %
Alternating tensile - compression strength	80 to 120 MPa

Microstructure



50 X - Graphite unetched



100 X - etched

Nov-11